

"Direct comparison of whole-heart navigator-gated magnetic resonance coronary angiography and 40- and 64-slice multidetector row computed tomography to detect the coronary artery stenosis in patients scheduled for conventional coronary angiography."

Pouleur, Anne-Catherine ; Le Polain De Waroux, Jean-Benoît ; Kefer, Joëlle ; Pasquet, Agnes ; Vanoverschelde, Jean-Louis ; Gerber, Bernhard

ABSTRACT

BACKGROUND: Both whole-heart magnetic resonance coronary angiography (WH-MRCA) and multidetector computed tomography (MDCT) have been proposed for the noninvasive identification of the coronary stenosis. The authors sought to directly compare the diagnostic accuracy of these noninvasive imaging techniques using the invasive quantitative coronary angiography as a reference standard. **METHODS AND RESULTS:** Seventy-seven consecutive patients (56 men, 61±14 years) prospectively underwent WH-MRCA and 40- or 64-slice MDCT before the quantitative coronary angiography. Diagnostic accuracy of WH-MRCA and MDCT for the visual identification of >50% diameter stenosis in segments of >1.5 mm size was compared using the quantitative coronary angiography as a reference. According to the quantitative coronary angiography, 49 of 992 coronary segments >1.5 mm diameter had >50% diameter stenosis. MDCT had a higher success rate (100% versus 88%, P<0.001) and enabled identification of more segments (963 versus 726, P<0.001) than did WH-MRCA. On a per-segment basis, WH-MRCA had similar sensitivity (47/49 or 96% versus 48/49 or 98%, P=0.9) but significantly lower specificity (644/943 or 68% versus 863/943 or 92%, P<0.001) and accuracy (691/992 or 70% versus 911/992 or 92%, P<0.001) for the detection of >50% diameter stenosis than did MDCT. On a per-patient basis, the sensitivity was similar (17/17 or 100% versus 16/17 or 94%, P=0.9), but specificity (43/60 or 72% versus 53/60 or 88%, P=0.024) and diagnostic accuracy (60/77 or 78%, versus 69/77 or 90%, P=0.044) of WH-MRCA for the detection of >50

CITE THIS VERSION

Pouleur, Anne-Catherine ; Le Polain De Waroux, Jean-Benoît ; Kefer, Joëlle ; Pasquet, Agnes ; Vanoverschelde, Jean-Louis ; et. al. *Direct comparison of whole-heart navigator-gated magnetic resonance coronary angiography and 40- and 64-slice multidetector row computed tomography to detect the coronary artery stenosis in patients scheduled for conventional coronary angiography.* In: *Circulation. Cardiovascular imaging*, Vol. 1, no. 2, p. 114-21 (2008) <http://hdl.handle.net/2078.1/26634> -- DOI : 10.1161/CIRCIMAGING.107.756304

Le dépôt institutionnel DIAL est destiné au dépôt et à la diffusion de documents scientifiques émanant des membres de l'UCLouvain. Toute utilisation de ce document à des fins lucratives ou commerciales est strictement interdite. L'utilisateur s'engage à respecter les droits d'auteur liés à ce document, principalement le droit à l'intégrité de l'œuvre et le droit à la paternité. La politique complète de copyright est disponible sur la page [Copyright policy](#)

DIAL is an institutional repository for the deposit and dissemination of scientific documents from UCLouvain members. Usage of this document for profit or commercial purposes is strictly prohibited. User agrees to respect copyright about this document, mainly text integrity and source mention. Full content of copyright policy is available at [Copyright policy](#)

Assessment of left ventricular mass and volumes by three-dimensional echocardiography in patients with or without wall motion abnormalities: comparison against cine magnetic resonance imaging

A-C Pouleur,¹ J-B le Polain de Waroux,¹ A Pasquet,¹ B L Gerber,¹ O Gérard,² P Allain,² J-L J Vanoverschelde¹

¹ Division of Cardiology, Department of Cardiovascular Diseases, Cliniques Universitaires St Luc, Université Catholique de Louvain, Brussels, Belgium; ² Philips Medical Systems Research, Paris, France

Correspondence to: Dr Jean-Louis Vanoverschelde, Division of Cardiology, Cliniques Universitaires St Luc, Avenue Hippocrate 10, 2881, B-1200 Brussels, Belgium; vanoverschelde@card.ucl.ac.be

A-CP and J-BPW contributed equally to the work.

Accepted 11 September 2007
Published Online First
1 November 2007

ABSTRACT

Aim: To evaluate if three-dimensional echocardiography (3-DE) is as accurate and reproducible as cine magnetic resonance imaging (cMR) in estimating left ventricular (LV) parameters in patients with and without wall motion abnormalities (WMA).

Methods: 83 patients (33 with WMA) underwent 3-DE and cMR. 3-DE datasets were analysed using a semi-automatic contour detection algorithm. The accuracy of 3-DE was tested against cMR in the two groups of patients. All measurements were made twice by two different observers.

Results: LV mass by 3-DE was similar to that obtained by cMR (149 (SD 42) g vs 148 (45) g, $p = 0.67$), with small bias (1 (28) g) and excellent interobserver agreement (-2 (31) g vs 4 (26) g). The two measurements were also highly correlated ($r = 0.94$), irrespective of WMA. End-diastolic and end-systolic LV volumes and ejection fraction by 3-DE and cMR were highly correlated ($r = 0.97, 0.98, 0.94$, respectively). Yet, 3-DE underestimated cMR end-diastolic volumes (167 (68) ml vs 187 (70) ml, $p < 0.001$) and end-systolic volumes (88 (56) ml vs 101 (65) ml, $p < 0.001$), but yielded similar ejection fractions (50% (14%) vs 50% (16%), $p = 0.23$).

Conclusion: 3-DE permits accurate determination of LV mass and volumes irrespective of the presence or absence of WMA. LV parameters obtained by 3-DE are also as reproducible as those obtained by cMR. This suggests that 3-DE can be used to follow up patients with LV hypertrophy and/or remodelling.

for assessing LV volumes, EF and mass, especially in clinical trials.^{6,7} However, its cost and availability remain problematic for routine clinical evaluation.

Three-dimensional echocardiography (3-DE) is a promising new method for assessing LV volumes and EF in patients with structural heart disease. When used in combination with computerised endocardial contour tracking algorithms, it indeed permits faster, more accurate and less operator-dependent quantitation of LV volumes and function than 1-DE or 2-DE.^{8–11} Preliminary data also suggest that it can be used to measure LV mass.^{12–16} So far, however, this requires both the endocardial and the epicardial contours to be traced manually on 3D-derived orthogonal 2-D cross-sections and has only been evaluated in a limited number of patients, most of whom had a normal LV geometry.

We have recently developed a computerised semi-automated volumetric contour tracking algorithm that enables both the endocardial and the epicardial contours to be detected with minimal interaction by the investigator. In this context, the aims of the present study were: (1) to validate this new border detection algorithm for quantitation of LV mass by using cMR as the reference method; (2) to assess the variability of 3-DE estimates of LV mass in patients with or without wall motion abnormalities (WMA); and (3) to evaluate the day-to-day variability of LV mass measurements obtained by 3-DE in comparison with those obtained by cMR.

METHODS

Study population

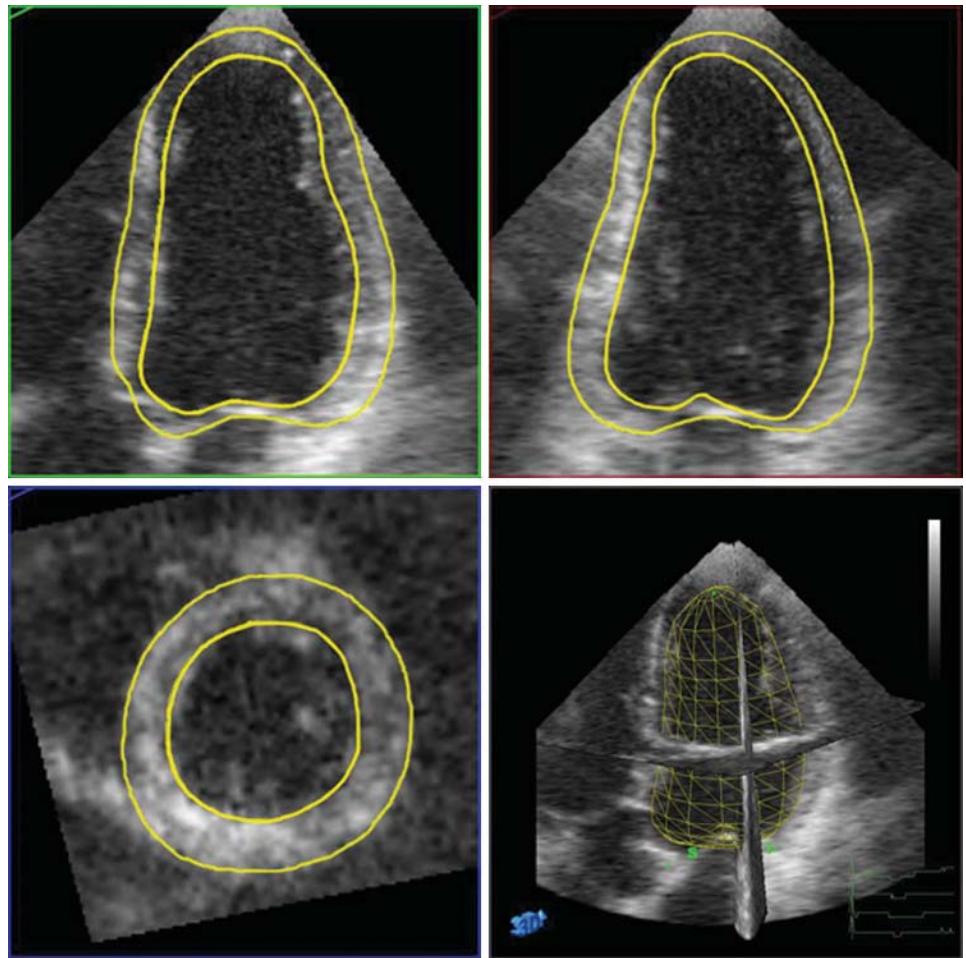
The study population consisted of 83 consecutive subjects (67 men, mean age 54 (SD 19) years, range 7–85 years) who underwent cMR and 3-DE in random order on the same day. There were 20 volunteers (15 men, mean age 29 (13) years, range 7–50 years) and 63 patients with heart disease (52 men, mean age 62 (13) years, range 37–85 years), of whom 20 had aortic valve disease, 10 severe mitral regurgitation and 33 a previous myocardial infarction. All subjects were in sinus rhythm. Patients with haemodynamic instability, constant arrhythmia (atrial fibrillation or more than five premature beats per minute) or any contraindication to cMR (ferromagnetic cerebral aneurysm clips, pacemaker or implantable defibrillator, or severe claustrophobia)

Left ventricular (LV) volumes, ejection fraction (EF) and mass are important prognostic factors in patients with cardiac diseases and are therefore frequently requested for serial testing.^{1–3} Because of its widespread availability, two-dimensional echocardiography (2-DE) is usually the first choice non-invasive imaging method for obtaining these measurements in daily clinical practice.^{4,5} Yet, several studies have shown that one-dimensional M-mode (1-DE) and 2-DE had limited test-retest reproducibility and that their accuracy was impacted by many factors including image quality, foreshortening of the LV cavity and geometric assumptions regarding LV volumes calculation. Because it provides superior image quality, is intrinsically three-dimensional and does not require any geometric assumption for volume calculation, cardiac magnetic resonance (cMR) has progressively become the reference method



This paper is freely available online under the BMJ Journals unlocked scheme, see <http://heart.bmj.com/info/unlocked.dtl>

Figure 1 End-diastolic, anatomically correct apical four-chamber and two-chamber views (upper left and right, respectively) and short-axis view (bottom left) selected off-line from a 3-DE dataset obtained in the same subject and resulting 3D-shell (bottom right). Superimposed semi-automatically detected endocardial and epicardial boundaries were used to calculate LV mass.



were not considered for inclusion. In five volunteers, 3-DE and cMR were repeated twice, on two different days, to assess test-retest reproducibility. Ten volunteers and 11 patients with previous myocardial infarction also had 3-DE with and without LV opacification using the commercially available ultrasound contrast agent Sonoview (Bracco, Geneva, Switzerland). The study protocol was approved by the local ethics committee and all patients gave informed consent before inclusion into the study.

Two-dimensional echocardiography

A complete M-mode, two-dimensional and Doppler examination was performed using a Sonos 7500 system or IE33 (Philips Medical Systems, Andover, MA, USA) with harmonic imaging. Images were acquired from standard parasternal and apical views, with short breath-holds if needed. The presence or absence of regional wall motion abnormalities (WMA) was assessed by using the 16-segments scoring model proposed by the American Society of Echocardiography (1 = normal wall motion, 2 = hypokinesia, 3 = akinesia). LV mass was derived from M-mode echocardiography as previously described.¹⁷

Three-dimensional echocardiography

Three-dimensional echocardiography was performed using a Sonos 7500 or a IE33 echocardiographic systems (Philips Medical Systems, Andover, MA, USA) equipped with a dedicated broadband, wide angle, matrix array transducer. Images were acquired from the apical window, with the patient in the left lateral decubitus position. Care was taken to include

the entire LV cavity within the pyramidal scan volume. 3-DE datasets were acquired using a wide-angled acquisition ($93 \times 80^\circ$) mode in which four wedge-shaped subvolumes ($93 \times 20^\circ$ each) are obtained over four different cardiac cycles during a short breath-hold. Acquisition was triggered to the R wave of every other cardiac cycle to allow time for storage of each subvolume, resulting in a total acquisition time of eight heart beats.

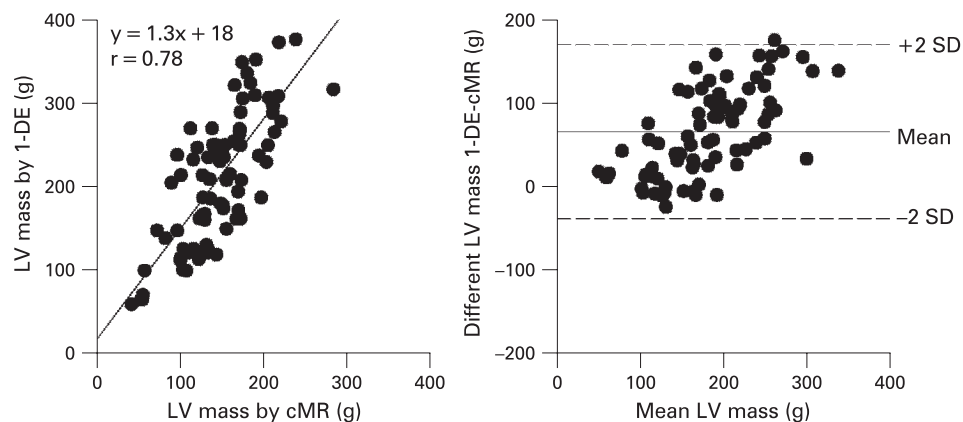
Cardiac magnetic resonance imaging

cMR imaging was performed on a 1.5 T magnet (Intera CV, Philips Medical Systems, Best, The Netherlands) using a five-element cardiac synergy coil for signal reception. After localisation of the heart using three-plane and oblique survey images, 10–12 contiguous short-axis cine images were prescribed to cover the entire left ventricle from base to apex. Images were acquired using a multislice cine vectocardiographic (VCG) gated balanced fast-field echo sequence with SENSE during serial breath-holds. Twenty cine phases were acquired using retrospective gating with a temporal resolution varying between 25–50 ms. Slice thickness was 8 mm and slice spacing was 2 mm. Imaging parameters were: repetition time 3.1 ms, echo time 1.6 ms, flip angle 60° , field of view 38 cm, image matrix of 160×128 pixels, SENSE acceleration factor 1.6, 12–20 lines acquired per phase.

Data analysis

Images were transferred to dedicated workstations (QLab and View Forum R4.1 for analysis of 3-DE and cMR images

Figure 2 Linear regression and limits of agreement between estimates of LV mass by 1-DE and cMR.



respectively, all Philips Medical systems). Patient information was removed. In all patients, measurements were performed in duplicate by two blinded observers, who were both familiar with 3-DE and cMR. To avoid recalling the patient's images, the blinded readers analysed 3-DE and cMR images on separate days. To assess intra-observer variability, in a randomly selected subgroup of 45 patients, measurements were repeated by one of the readers, one month after the first reading.

Three-dimensional echocardiography

Image quality of 3-DE images was graded semi-quantitatively by both readers on a five-point scale as 1 = non-analysable, 2 = fair, 3 = moderate, 4 = good and 5 = excellent. Measurements of LV volumes, mass and EF were performed off-line. The 3-DE datasets were analysed with a prototype version of 3DQ-QLab software that allows for semi-automatic detection of endocardial and epicardial borders. Briefly, the 3D volume dataset is first displayed in three different cross-sections that can be modified interactively. For the detection algorithm to work properly¹⁸ the anatomically correct four-chamber and two-chamber views need to be displayed simultaneously. Markers are then placed onto the mitral annulus and the apex, both in end-diastole and end-systole. Using these markers, the software program first creates truncated ellipsoid end-diastolic and end-systolic 3D meshes of the LV. The vertices of these meshes are then automatically attracted to the image borders (3D gradient of image intensity) while respecting prespecified surface smoothing constraints (in order to minimise local curvature on the surface). The end-diastolic and the end-systolic

3D meshes deform until equilibrium is reached between closeness to the borders and minimal curvature. If needed, manual adjustments can be applied. The volumes of the obtained 3D- end-diastolic and end-systolic LV meshes include the papillary muscles into the LV cavity and correspond to the LV end-diastolic and end-systolic LV volumes. The end-diastolic epicardial contours are next automatically estimated by adding a fixed myocardial wall thickness of 8.8 mm to the endocardial mesh.¹⁹ Manual corrections can then be applied, if needed. These epicardial contours are used to calculate the myocardial volume by subtracting the end-diastolic endocardial volume from the end-diastolic epicardial volume. The difference between these two volumes is then multiplied by the specific mass of myocardial tissue (1.05 g/ml) to obtain LV mass (fig 1).

Cine magnetic resonance imaging

cMR loops were analysed off-line with a commercial software (View Forum R4.1). In every end-diastolic short-axis slice, endocardial and epicardial contours were manually traced to calculate LV volumes, mass and EF, while including papillary muscles in the LV cavity.

Statistical analysis

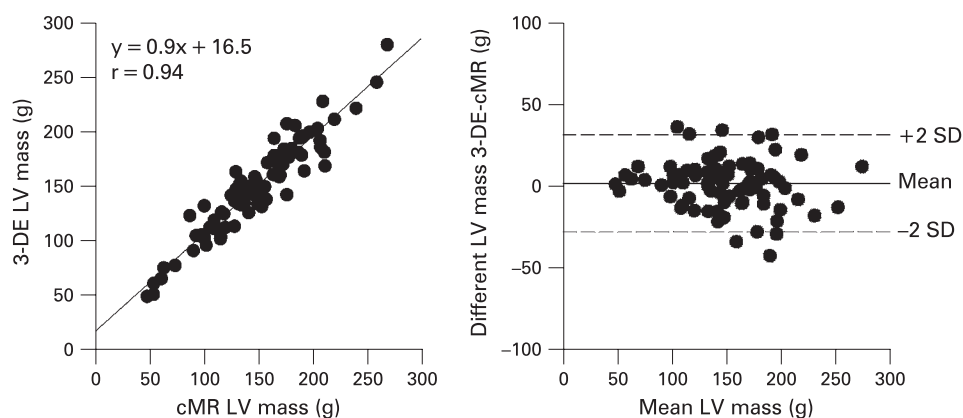
Statistical analysis was performed using SPSS version 11.5. Values are reported as mean (plus or minus 1 SD). The average of duplicate measurements was used for statistical analysis. Linear regression analysis and Bland-Altman plots with assessment of systematic bias and 95% confidence intervals, as well as two-way mixed intraclass correlation coefficient (ICC) were

Table 1 Clinical and echocardiographic characteristics

| | All patients | Controls | WMA group |
|--|--------------|----------|-----------|
| Clinical characteristics | | | |
| No of patients | 83 | 50 | 33 |
| Age (years) | 54 (19) | 46 (19) | 67 (11) |
| Gender (males/females) | 67/16 | 36/14 | 31/2 |
| NYHA | | | |
| I | 38 (46%) | 36 (72%) | 2 (6%) |
| II | 21 (25%) | 11 (22%) | 10 (30%) |
| III | 24 (29%) | 3 (6%) | 21 (63%) |
| Echocardiographic characteristics | | | |
| RWMS | 21 (8) | 16 (0) | 30 (6) |
| AR \geq 3 | 13 (16%) | 13 (26%) | 0 (0%) |
| AS | 7 (8%) | 7 (14%) | 0 (0%) |
| MR \geq 3 | 10 (12%) | 10 (20%) | 0 (0%) |
| cMR ejection fraction | 50 (16%) | 59 (9%) | 36 (14%) |

AR, aortic regurgitation; AS, aortic stenosis; MR, mitral regurgitation; RWMS, regional wall motion score.

Figure 3 Linear regression and limits of agreement between estimates of LV mass by 3-DE and cMR.



used to compare LV mass between 1-DE, 3-DE and cMR.²⁰ Systematic differences in measurements between these methods were assessed using the Student test. Inter-observer reliability for measurement of LV volumes and mass for each technique was assessed using two-way random, single measure ICC. Intra-observer and intra-subject reliability was assessed using one-way random two measures ICC. All tests were two-sided and a *p* value <0.05 was considered as statistically significant.

RESULTS

Patient characteristics/study protocol

The characteristics of the study population are summarised in table 1. All patients successfully completed 3-DE and cMR. The duration of a complete 3-DE examination was shorter (5 minutes on average, including patient preparation) than that of the cMR examination (25 minutes on average, including patient preparation and acquisition of scout images, reference scan for SENSE and cine short-axis slices). By contrast, the time needed to complete the analysis (LV volumes and mass) tended to be longer with 3-DE (434 (162) seconds, including 25 (7) seconds for automated contour tracking and 408 (160) seconds for manual correction) than for cMR (344 (162) seconds).

None of the patients were excluded because of poor image quality or non-interpretible 3-DE images. Thirteen patients had excellent (16%), 29 good (35%), 27 moderate (32%) and 14 patients fair (17%) 3-DE image quality. Manual corrections were necessary to optimise endocardial and epicardial contours in all patients for the two imaging methods. With 3-DE, these corrections resulted in only minor changes in the estimated epicardial LV volumes (on average 10 (15) ml from 282 (67) ml before correction to 292 (71) ml after correction). Correction also tended to be larger in patients with normal wall motion (NWM) (17 (10) ml) than in those with WMA (7 (16) ml).

Based on the 2-DE, 33 patients had wall motion abnormalities (WMA group, mean wall motion score: 30 (6)). Subjects with NWM (*n* = 50, NWM group) served as a controls.

Comparison of 1-DE and cMR-derived LV mass

Linear regression and Bland-Altman plots of LV mass by 1-DE versus cMR are shown in figure 2. 1-DE yielded significantly higher LV mass values than cMR (209 (77) g and 149 (42) g, respectively, *p*<0.001). Although both measurements correlated reasonably well (*r* = 0.78, *p*<0.001), a large bias was noted (62 (42) g).

Comparison of 3-DE and cMR-derived LV mass

Mean LV mass values by 3-DE and cMR are reported in table 2. Linear regression and Bland-Altman plots of LV mass by these two methods are shown in figure 3. LV mass by 3-DE and cMR were not significantly different from each other (149 (42) g and 148 (45) g, respectively, *p* = 0.67) and were highly correlated (*r* = 0.94, *p*<0.001).

Measurement of LV mass in patients with and without wall motion abnormalities

3-DE and cMR yielded similar values for LV mass in patients with (167 (35) g vs 164 (37) g, *p* = 0.11) and without (137 (43) g vs 138 (47) g, *p* = 0.77) WMA. In both groups, 3-DE and cMR values were highly correlated (*r* = 0.94 each) with only small absolute biases (3 (20) g vs -1 (932) g, *p* = 0.25) and relative biases (5% (8%) vs 9% (14%), *p* = 0.17) (fig 4).

Comparison of LV volumes and ejection fraction between RT-3DE and cMR

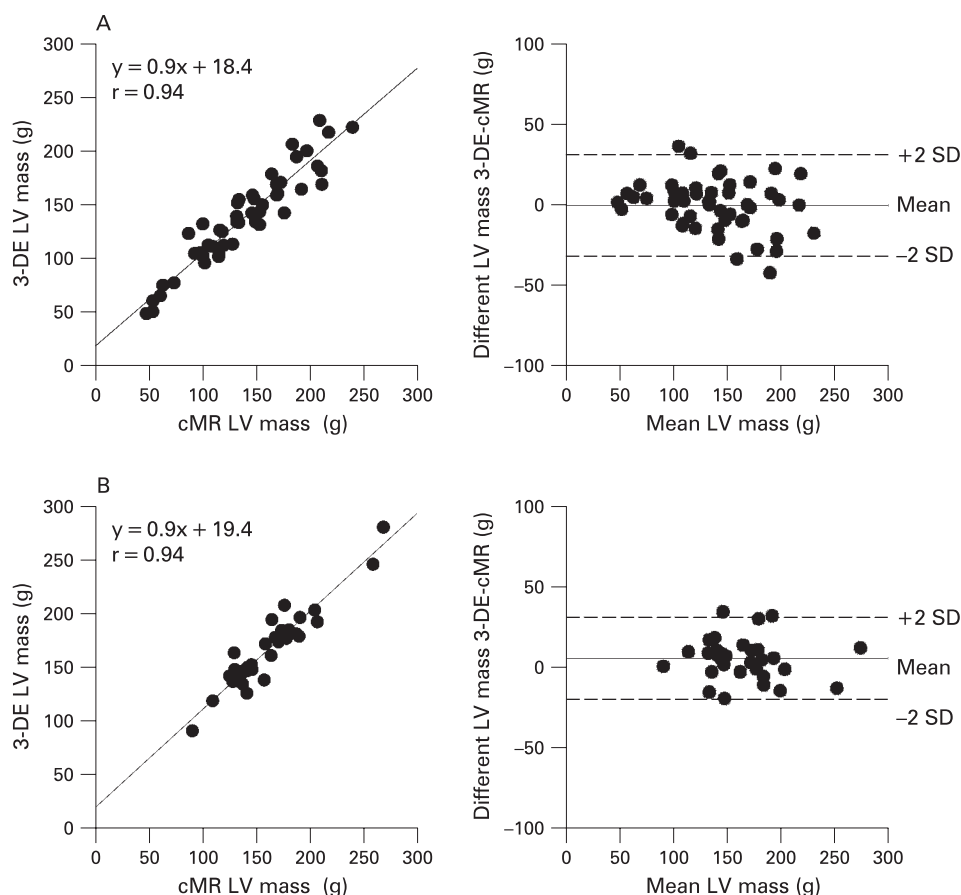
3-DE measurements of LV volumes and EF were also highly correlated with those obtained by cMR (*r* = 0.97, 0.98, 0.94 for EDV, ESV and EF, respectively). Yet, volumes were significantly underestimated by 3-DE (167 (68) ml vs 187 (70) ml for EDV, *p*<0.001; 88 (56) ml vs 101 (65) ml for ESV, *p*<0.001), resulting in small negative biases (-20 ml for EDV and -13 ml for ESV, both *p*<0.05, table 2 and fig 5A).

Table 2 Mean values for LV mass, EDV, ESV, EF by 3-DE versus cMR

| | 3-DE | cMR | Comparison between 3-DE and cMR | | |
|-------------|----------|----------|---------------------------------|----------|---------|
| | | | r | Bias | p Value |
| LV mass (g) | 149 (42) | 148 (45) | 0.94 | 1 (28) | 0.67 |
| EDV (ml) | 167 (68) | 187 (70) | 0.97 | -20 (31) | <0.001 |
| ESV (ml) | 88 (56) | 101 (65) | 0.98 | -12 (31) | <0.001 |
| EF (%) | 50 (14) | 50 (16) | 0.94 | 1 (11) | 0.23 |

EDV, end-diastolic volume; EF, ejection fraction; ESV, end-systolic volume; ICC, intraclass correlation coefficient.

Figure 4 Linear regression and limits of agreement of estimates of LV mass in patients with normal wall motion (A) or with wall motion abnormalities (B) by 3-DE and cMR.



Comparison of LV volumes and ejection fraction with and without injection of contrast

Use of contrast to opacify the LV cavity attenuated the differences between the two techniques (-3 ml for EDV and -3 ml for ESV, both $p < 0.05$) but did not affect the measurement of EF (48% (15%) vs 50% (15%), $p = 0.62$). As shown in table 3, the extent to which contrast enhancement corrected the underestimation of LV volumes by 3-DE was similar in patients with (+20 ml for EDV and +9 ml for ESV) and without (+18 ml for EDV and +3 ml for ESV) wall motion abnormalities ($p = 0.68$ and $p = 0.08$ for EDV and ESV respectively).

Reproducibility

Results of inter-observer and intra-observer reproducibility are summarised in table 4. The inter-observer and intra-observer reproducibility of 3-DE and cMR was similarly high. Test-retest reproducibility was also very good for both methods (table 5).

DISCUSSION

The results of our study indicate that 3-D imaging of the LV with either 3-DE or cMR produces comparable results in terms of LV volumes, EF and mass in patients with or without wall motion abnormalities. Our data also show that 3-DE and cMR provide similarly low inter-observer variability for all LV measurements and well as similarly high test-retest reproducibility.

Accuracy of 3-DE assessment of LV volumes, ejection fraction and mass

Over the past 5 years, numerous studies have validated the use of 3-DE for assessment of LV volumes and EF, using various

imaging methods as reference standards. All these studies have shown a greater accuracy of 3-DE compared with 1-DE or 2-DE.^{9–11 15 21–23} The results of this study confirm and extend these previous observations. As in previous studies, we found that semi-automated 3-DE measurements of LV volumes and EF were strongly correlated with those obtained by cMR. We also observed that 3-DE LV volumes were significantly underestimated compared with those obtained by cMR. Underestimation of LV volumes by 3-DE has been reported previously and has been attributed to technical limitations inherent in ultrasound imaging in general and 3-DE in particular, such as the inability to visualise the endocardial contours, the exclusion of trabecular structures from the LV cavity or the partial cut-off of the left ventricle.²⁴ Divergent inclusion of the papillary muscles into the LV cavity between the two techniques has been incriminated as well. However, this was unlikely to be the case in our study, since the papillary muscles were treated in exactly the same way with both techniques. Interestingly, we found that the use of ultrasound contrast agents to opacify the LV cavity almost completely abolished the underestimation of LV volumes by 3-DE. This suggests that improved border delineation and exclusion of trabecular structures are the most likely contributors to the underestimation of LV volumes by 3-DE.

In the present study, we also evaluated the possibility of semi-automatically measuring LV mass using 3-DE. For this purpose, we modified the computerised contour-tracking algorithm used for endocardial border detection to allow for the estimation of the epicardial contours as well. Our data indicate that LV mass measurements obtained using this novel approach are highly accurate, even in patients whose LV cavity and walls

Figure 5 Linear regression and limits of agreement of estimates of end-diastolic volume (EDV) (A), end-systolic volume (ESV) (B) and ejection fraction (EF) (C) by 3-DE and cMR.

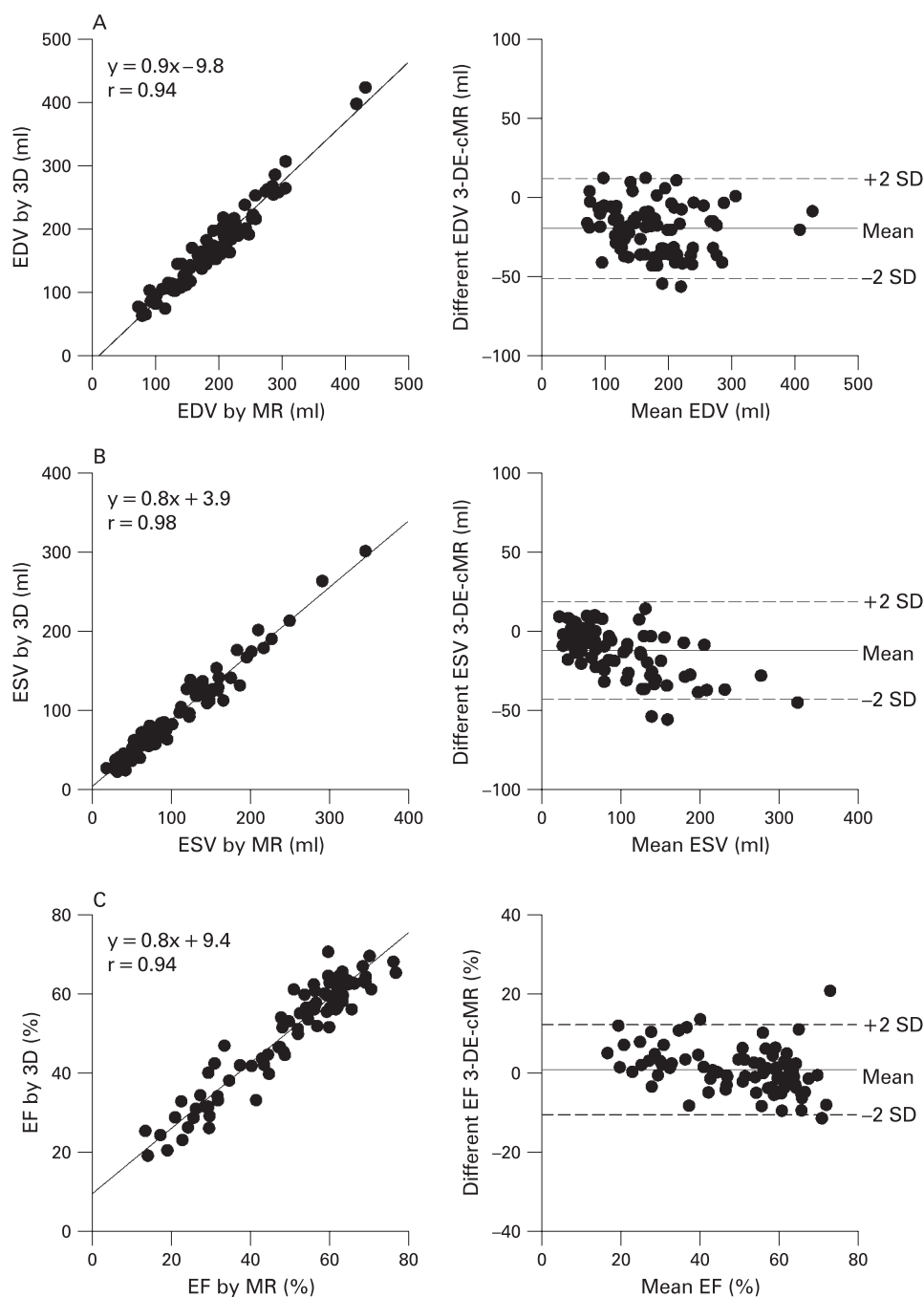


Table 3 Mean values for LV volumes measurements using unenhanced 3-DE, 3-D LVO and cMR in patients with RWMA (n = 11) and with NWM (n = 10)

| | | EDV (ml) | ESV (ml) | EF (%) |
|---------|-------------------|-----------------|----------------|----------------|
| 3-DE | All groups | 137 (46) | 75 (47) | 48 (15) |
| | RWMA group | 145 (55) | 94 (56) | 39 (14) |
| | NWM group | 129 (33) | 54 (20) | 59 (4) |
| 3-D LVO | All groups | 156 (49) | 81 (51) | 50 (15) |
| | RWMA group | 156 (59) | 103 (61) | 40 (15) |
| | NWM group | 147 (35) | 57 (20) | 61 (6) |
| cMR | All groups | 159 (51) | 84 (54) | 50 (16) |
| | RWMA group | 168 (63) | 107 (65) | 39 (14) |
| | NWM group | 149 (36) | 58 (22) | 59 (4) |

NWM, normal wall motion; RWMA, regional wall motion abnormalities. Other abbreviations as in table 2.

Table 4 Intra-observer and inter-observer reproducibility of LV mass measurements using 3-DE and cMR

| | | Reproducibility (ICC) | | Limits of agreement Mean (2 SD) | |
|--------|------------|-----------------------|----------------|------------------------------------|----------------|
| | | Intra-observer | Inter-observer | Intra-observer | Inter-observer |
| RT-3DE | RWMA group | 0.96 | 0.94 | -3 (14) | 3 (27) |
| | NWM group | 0.97 | 0.94 | -1 (26) | -6 (31) |
| MRI | RWMA group | 0.94 | 0.95 | -3 (18) | 7 (26) |
| | NWM group | 0.97 | 0.96 | -1 (30) | 2 (26) |

ICC, intraclass correlation coefficient. Other abbreviations as in tables 2 and 3.

Table 5 Test-retest reproducibility

| | Mean (SD) J0 | Mean (SD) J1 | Limits of agreement Mean (2 SD) | p Value |
|---------------|--------------|--------------|------------------------------------|---------|
| 3-DE J0 vs J1 | 118 (25) g | 121 (24) g | 3 (9) g | 0.22 |
| cMR J0 vs J1 | 116 (35) g | 116 (33) g | 1 (8) g | 0.88 |

are distorted by a previous myocardial infarction. So far, very few studies have examined the ability of 3-DE to measure LV mass. Although their results indicated that measurements of LV mass by 3-DE are feasible and correlate reasonably well with those obtained by cMR, most of these studies only recruited a limited number of patients (around 20 each), few investigated the accuracy of 3-DE in patients with distorted LV wall geometry^{25–27} and none used a semi-automated tracking algorithm that detects endocardial contours and facilitates epicardial contouring. To the best of our knowledge, the present study is the first to demonstrate the accuracy of such an approach in assessing LV mass in a large cohort of normal and diseased patients, with and without regional wall thickness abnormalities.

Reproducibility of 3-DE assessment of LV volumes, ejection fraction and mass

Previous studies using 3-DE to measure LV volumes and EF have shown that this technique was more reproducible than 2-DE and as reproducible as cMR.^{12 22} These favourable results probably reflect the combined use of 3-D datasets and semi-automated edge-detection algorithms, both of which contribute to better standardise the partition between the wall and cavity and hence to minimise variation. The results of our study are thus in line with these previous results. Our data also suggest that LV mass measurements from 3-DE images are as reproducible as those obtained by cMR, a particularly important finding for the follow-up of patients with LV hypertrophy or remodelling.

Test-retest variation

In contrast with the more widely reported parameters of intra-observer and inter-observer variability, which relate to the repeated measurement of a single dataset, test-retest variation involves repetition of the entire acquisition and analysis. Assessment of test-retest variations is important because both physiological and imaging factors contribute to variations in LV function and mass over time. Previous work found significant test-retest variations with respect to both the angulation and displacement of 2-DE imaging planes. These variations partially explain the variability in 2-DE measurements of LV mass that have been highlighted in several studies. The present study demonstrates that test-retest variations in 3-DE and cMR measurements of LV volumes, EF and mass are quite similar.

This is consistent with previous studies.^{12 20 28} This is an important finding because these measurements are often used to help make decisions about initiating or altering treatment in hypertensive subjects. They therefore need not only to be accurate but also reproducible over time. Since 3-DE is far more available and less costly than cMR, our findings suggest that 3-DE could become the ideal non-invasive imaging method to assess LV mass serially, whether in daily clinical practice or in the context of clinical trials on the regression of LV hypertrophy.

Study limitations

First, the 3-D algorithm used to draw the epicardial contours is not yet fully automatic and still requires manual adjustments. Future development of the software should thus aim at tracking the epicardial contours automatically. Second, because of its robustness and reproducibility, we used cMR as the standard to which 3-DE measurements of LV volumes and mass were compared. When doing so, one should not forget that the assessment of LV parameters by cMR has its own limitations, including partial volume effects, the presence of a chemical shift artefact at the muscle-cavity boundary and uncertainties about whether or not to include the most basal slice of the cMR dataset into the measurements of LV volumes. Including or excluding the most basal cMR slice from the measurements can indeed result in a plus or minus 10% variation in estimated volumes.

CONCLUSION

The results of our study indicate that 3-DE, in combination with semi-automated border detection, allows for a robust, accurate and reproducible quantification of LV volumes, EF and mass. The data also show that the robustness, accuracy and reproducibility of 3-DE is equal to that of cMR and similar in patients with and without regional wall motion abnormalities.

Funding: Work supported by the Fondation Nationale de la Recherche Scientifique of the Belgian Government (FRSM). A-CP is aspirant of the Fondation Nationale de la Recherche Scientifique of the Belgian Government. J-BPW is supported by the Fondation Damman, Louvain-la-Neuve, Belgium.

Competing interests: None.

REFERENCES

1. Hwang MH, Hammermeister KE, Orian C, *et al.* Preoperative identification of patients likely to have left ventricular dysfunction after aortic valve replacement.

- Participants in the Veterans Administration Cooperative Study on Valvular Heart Disease. *Circulation* 1989;**80**:165–76.
2. **White HD**, Norris RM, Brown MA, *et al*. Left ventricular end-systolic volume as the major determinant of survival after recovery from myocardial infarction. *Circulation* 1987;**76**:44–51.
 3. **Wong M**, Johnson G, Shabetai R, *et al*. Echocardiographic variables as prognostic indicators and therapeutic monitors in chronic congestive heart failure. Veterans Affairs Cooperative Studies V-HeFT I and II. V-HeFT VA Cooperative Studies Group. *Circulation* 1993;**87**:VI65–70.
 4. **Kuhl HP**, Hanrath P, Franke A. M-mode echocardiography overestimates left ventricular mass in patients with normal left ventricular shape: a comparative study using three-dimensional echocardiography. *Eur J Echocardiogr* 2003;**4**:312–9.
 5. **Myerson SG**, Montgomery HE, World MJ, *et al*. Left ventricular mass: reliability of M-mode and 2-dimensional echocardiographic formulas. *Hypertension* 2002;**40**:673–8.
 6. **Bottini PB**, Carr AA, Prisant LM, *et al*. Magnetic resonance imaging compared to echocardiography to assess left ventricular mass in the hypertensive patient. *Am J Hypertens* 1995;**8**:221–8.
 7. **Grothues F**, Smith GC, Moon JC, *et al*. Comparison of interstudy reproducibility of cardiovascular magnetic resonance with two-dimensional echocardiography in normal subjects and in patients with heart failure or left ventricular hypertrophy. *Am J Cardiol* 2002;**90**:29–34.
 8. **Caiani EG**, Corsi C, Zamorano J, *et al*. Improved semiautomated quantification of left ventricular volumes and ejection fraction using 3-dimensional echocardiography with a full matrix-array transducer: comparison with magnetic resonance imaging. *J Am Soc Echocardiogr* 2005;**18**:779–88.
 9. **Jacobs LD**, Salgo IS, Goonewardena S, *et al*. Rapid online quantification of left ventricular volume from real-time three-dimensional echocardiographic data. *Eur Heart J* 2006;**27**:460–8.
 10. **Jenkins C**, Chan J, Hanekom L, *et al*. Accuracy and feasibility of online 3-dimensional echocardiography for measurement of left ventricular parameters. *J Am Soc Echocardiogr* 2006;**19**:1119–28.
 11. **Lang RM**, Mor-Avi V, Sugeng L, *et al*. Three-dimensional echocardiography: the benefits of additional dimension. *J Am Coll Cardiol* 2006;**48**:2053–69.
 12. **Jenkins C**, Bricknell K, Chan J, *et al*. Comparison of two- and three-dimensional echocardiography with sequential magnetic resonance imaging for evaluating left ventricular volume and ejection fraction over time in patients with healed myocardial infarction. *Am J Cardiol* 2007;**99**:300–6.
 13. **Mor-Avi V**, Sugeng L, Weinert L, *et al*. Fast measurement of left ventricular mass with real-time three-dimensional echocardiography: comparison with magnetic resonance imaging. *Circulation* 2004;**110**:1814–8.
 14. **Oe H**, Hozumi T, Arai K, *et al*. Comparison of accurate measurement of left ventricular mass in patients with hypertrophied hearts by real-time three-dimensional echocardiography versus magnetic resonance imaging. *Am J Cardiol* 2005;**95**:1263–7.
 15. **Sugeng L**, Mor-Avi V, Weinert L, *et al*. Quantitative assessment of left ventricular size and function: side-by-side comparison of real-time three-dimensional echocardiography and computed tomography with magnetic resonance reference. *Circulation* 2006;**114**:654–61.
 16. **Van den Bosch AE**, Robbers-Visser D, Krenning BJ, *et al*. Comparison of real-time three-dimensional echocardiography to magnetic resonance imaging for assessment of left ventricular mass. *Am J Cardiol* 2006;**97**:113–7.
 17. **Devereux RB**, Reichek N. Echocardiographic determination of left ventricular mass in man. Anatomic validation of the method. *Circulation* 1977;**55**:613–8.
 18. **Gerard O**, Billon AC, Rouet JM, *et al*. Efficient model-based quantification of left ventricular function in 3-D echocardiography. *IEEE Trans Med Imaging* 2002;**21**:1059–68.
 19. **Pluim B**, Zwinderman A, Van der Laarse A, *et al*. The athlete's heart: a meta-analysis of cardiac structure and function. *Circulation* 2000;**101**:336.
 20. **Bland JM**, Altman DG. Statistical methods for assessing agreement between two methods of clinical measurement. *Lancet* 1986;**1**:307–10.
 21. **Abdullah M**, Maeno Y, Bigras JL *et al*. Superiority of 3-dimensional versus 2-dimensional echocardiography for left ventricular volume assessment in small piglet hearts. *J Am Soc Echocardiogr* 2000;**13**:918–23.
 22. **Jenkins C**, Bricknell K, Hanekom L, *et al*. Reproducibility and accuracy of echocardiographic measurements of left ventricular parameters using real-time three-dimensional echocardiography. *J Am Coll Cardiol* 2004;**44**:878–86.
 23. **Van den Bosch AE**, Robbers-Visser D, Krenning BJ, *et al*. Real-time transthoracic three-dimensional echocardiographic assessment of left ventricular volume and ejection fraction in congenital heart disease. *J Am Soc Echocardiogr* 2006;**19**:1–6.
 24. **Muller S**, Bartel T, Katz M, *et al*. Partial cut-off of the left ventricle; determinants and effect on volume parameters assessed by real-time 3-D echocardiography. *Ultrasound Med Biol* 2003;**29**:25–30.
 25. **Chan J**, Jenkins C, Khafagi F, *et al*. What is the optimal clinical technique for measurement of left ventricular volume after myocardial infarction? A comparative study of 3-dimensional echocardiography, single photon emission computed tomography, and cardiac magnetic resonance imaging. *J Am Soc Echocardiogr* 2006;**19**:192–201.
 26. **Corsi C**, Lang RM, Veronesi F, *et al*. Volumetric quantification of global and regional left ventricular function from real-time three-dimensional echocardiographic images. *Circulation* 2005;**112**:1161–70.
 27. **Mannaerts HF**, van der Heide JA, Kamp O, *et al*. Early identification of left ventricular remodelling after myocardial infarction, assessed by transthoracic 3D echocardiography. *Eur Heart J* **25**:680–7.
 28. **Nosir YF**, Lequin MH, Kasprzak JD, *et al*. Measurements and day-to-day variabilities of left ventricular volumes and ejection fraction by three-dimensional echocardiography and comparison with magnetic resonance imaging. *Am J Cardiol* 1998;**82**:209–14.